

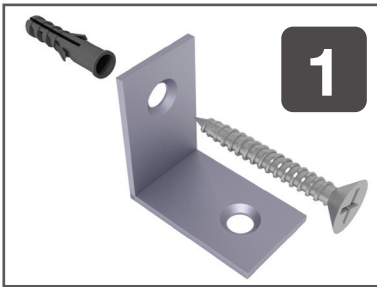
# Spectrum L Brackets

- Simple L brackets for mounting Spectrum tiles and traps flush against walls and across room corners
- Sold in a pack of 10
- Screws and wall plugs not included

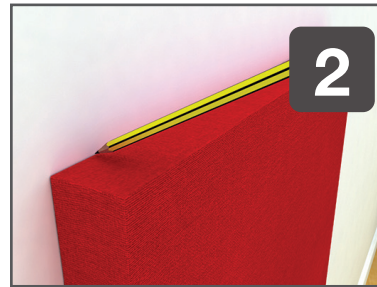


Spectrum Product	Product Size MM	Location	No of L Brackets
Tile 25L	1150 x 575 x 25	Wall	4
Tile 25XL	1500 x 575 x 25	Wall	6
Tile 50	575 x 575 x 50	Wall	4
Tile 50L	1150 x 575 x 50	Wall	4
Corner Trap	575 x 575 x 100	Vertical Corner	4
		Horizontal Corner	4
Corner Trap L	1150 x 575 x 100	Vertical Corner	4
		Horizontal Corner	4
Trap 50L	1150 x 575 x 50	Horizontal Corner	4

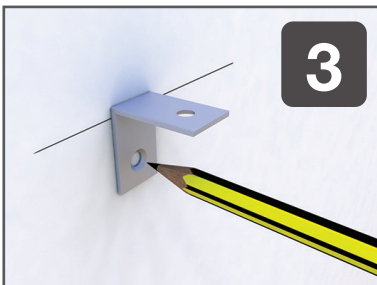
## Section A - Fixing A Tile To A Wall



Using suitable screws and wall plugs, fix 2 L Brackets to the wall at the correct height to support the bottom edge of your tile. They should be located approximately 20mm in from the corners of the tile.



Rest your tile on the brackets and mark the top edge with a pencil.



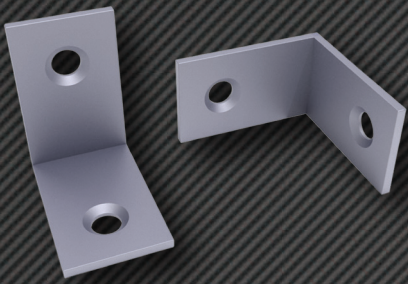
Offer your top brackets up to the lines and mark the holes before drilling and fixing as you did in Step 1. Make sure you position the bracket correctly - the inside of the top leg should be on the line.



Push your tile between the brackets. Fix 4 suitable screws into the MDF edging of the tile. We recommend using a 'pan head' wood screw.

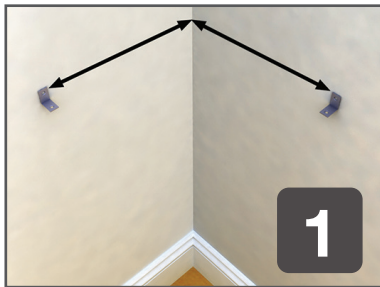
Tip: Use a spirit or laser level to mark out your bottom brackets.



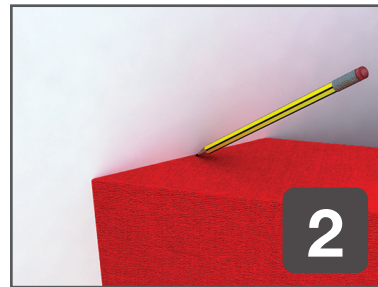


# Spectrum L Brackets

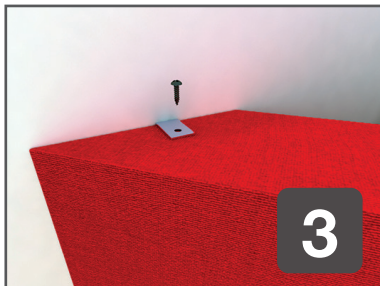
## Section B - Fixing A Bass Trap In A Vertical Corner



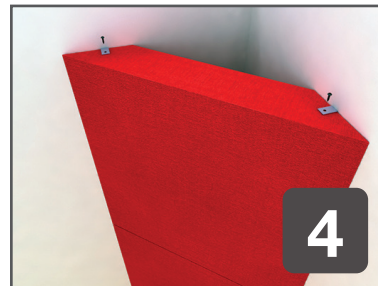
As per Section A, fix 2 L Brackets at the correct height to support the bottom edge of your trap. They should be located on adjacent walls, each 315mm from the corner.



Sit the trap on your bottom brackets and mark the top bracket positions. Fit the top brackets as per Section A.

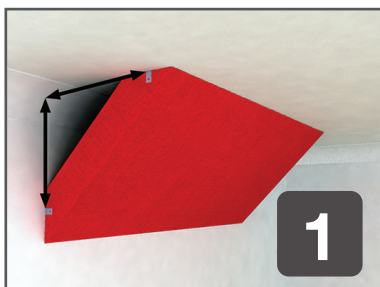


Push your bass trap between the brackets. Fix 4 'pan-head' wood screws into the MDF edging of the trap.

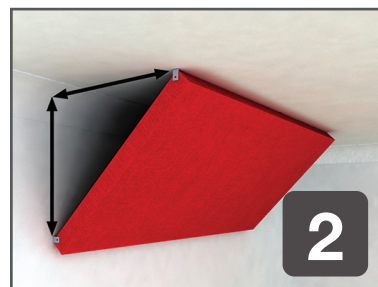


If you are stacking multiple traps then only the bottom trap needs bottom brackets. Additional traps are just stacked on top and fixed with top brackets only.

## Section C - Fixing A Bass Trap In A Horizontal Corner



Fix one bracket to the ceiling and one to the wall. If using a corner trap, each should be 315mm from the corner. Note that the corner may be hidden behind the coving! If so just offer the trap up and mark it.



If using a Trap 50L (with square edges), each bracket should be 395mm from the corner.



As per Section A and B, mark and fit 2 L Brackets at the far end of the trap and fix into the MDF edging of the trap with 4 'pan head' wood screws.

Please visit  
[www.eqacoustics.com](http://www.eqacoustics.com)  
for technical support and information  
on other fixings such as Cloud  
Hangers.